



INTRODUCTION OF

Prima Pvt. Ltd.

Pearl Plastics Products.

Since - 1968





- **VISION & MISSION FOR GROWTH**

VISION

To be a global company with trail blazing innovations.

MISSION

- To provide innovative solutions that touch lives, Supports Sustainability and Brings Delight.
- To be a Benchmark for Quality & Service
- To build lasting relationships with customer on high level of Trust, Transparency and Respect



- **PRIMA - GROUP COMPANIES**



UNIT 1.

T-73 MIDC BHOSARI, Pune

UNIT 2.

J-195 MIDC BHOSARI, Pune

Core Services

- Injection molding , Assemblies and Products
- Blow Moulding and Assemblies
- Hybrid thermoplastic composite molding.
- Ultrasonic welding, Hot Plate Welding
- Project Management.
- Assembly.

UNIT 3 .

**Talegaon Dhamdhere,
Near Sanaswadi, Pune**

M/s PEARL PLASTIC PRODUCTS

J-381 MIDC BHOSARI

Core Services

- Product Design /Engineering.
- Mould Design.
- Mould Flow Analysis.
- FEA.
- Soft Tools for Prototyping.
- Holding/ Qualifying Check.
- Fixtures.



- **CULTIVATION OF PRIMA**

- 1968 PEARL PLASTICS WAS ESTABLISHED WITH 6 HAND MOULDING MACHINES.
- 1995 THE MAJOR CUSTOMER WAS PHILIPS INDIA FOR THEIR SMALL PLASTIC PARTS
- 1990 THE COMPANY TOOK OVER PRIMA PAPER & ENGINEERING
- 2000 THE COMPANY OPERATIONS COMMENCED AT J-195 IN MIDC – UNIT 2
- 2000-2010 EXPANDED WITH MAJOR CUSTOMERS IN INJECTION AND BLOW MOULDING PRODUCTS AND ASSEMBLIES
- 2007 IMPORTED MACHINES BATTENFELD, DEMAG, UBE INSTALLED IN NEW FACILITY.
- 2010 THE COMPANY OPERATIONS COMMENCED AT Talegaon Dhamdhere – UNIT 3
- 2010 NEW MACHINE UPTO 4000 T INSTALLED FROM (ZHEJIANG SOUND)
- 2013 TIEUP WITH OVERSEAS TOOLMAKER (CHINA/KOREA/TAIWAN) FOR DASHBOARD (IP) & BUMPER IN SHORT TIME LINE AND COST EFFECTIVE WITH BEST QUALITY.
- 2016 - 2022 - REACHED A HEAD COUNT OF 60 + INJECTION MOULDING MACHINES RANGING FROM 50 T TO 5400 T AND BLOW MOULDING 15 MACHINES RANGING FROM 5 LIT TO 300 LIT. ACROSS ALL PUNE PLANT
- EXPORT TO USA – 3% OF THE TOTAL TURNOVER



- FACILITIES – AT A GLANCE**

Sr No	Location	Business	M/c. Detail	Appx. Strength	Major Customer
1	Unit 1- Bhosari (Pune)	Small Tonnage Molding, and Assemblies, Central Office	10 Nos. Injection Molding	100 Nos.	M&M, FML and TML
2	Unit 2- Bhosari (Pune)	Medium tonnage Injection Molding, Blow Moulding Production	10 Nos. Blow Molding. 2 Nos. Injection Molding	30 Nos.	TACO, TML, FML
3	Talegaon Dhamdhere Near Sanaswadi (Pune)	High Tonnage Injection and Blow Molding and Assemblies	30 Nos. Injection Molding 10 No. Blow Molding	200 Nos.	TML, FML, M&M, TACO, FIAT, JohnDeer
4	Tool Room Bhosari (Pune)	Tool manufacturing, Check fixtures, Gauge Manufacturing	VMC – 3 Nos. EDM – 1 Nos. Leith – 2 Nos.	20 Nos.	For All Customers



- **PRIMA – MISSION & VISION**

MISSION

Our Mission is to be a World Class, Cost Effective Component Solution Provider for Auto and Non-Auto segments as a Preferred Partner for Mutual Success.

VISION

Double the annual revenue by 2025, supplying to automotive and Non- Automotive customers, Become cost effective solution provider in plastic product manufacturing industry by continuously upgrading on technologies and satisfying all stakeholders profitably.



- **SUSTAINANCE STRATEGY**

Business

- Financial Review
- Customer Relations
- Customer Connect
- Research & Development

Process

- PQS
- DWM
- QRM
- Best Practices

People

- Leadership
- Training
- Employee Engagement
- Monthly QRM & MRM
- Rewards

- **QUALITY POLICY & OBJECTIVES**



QUALITY POLICY

- We are committed to make PRIMA PRIVATE LIMITED. a growth oriented organization, with recognition as reliable and consistent quality supplier to our esteemed customers.
- We are committed to implement modern techniques for present product range by the way of adding latest machines & new technologies.

Mr. Shashank R Joshi
Director

QUALITY OBJECTIVES

- Customer Satisfaction by Achieving '0' PPM for all Customers
- Business Growth
- Continuous Improvement

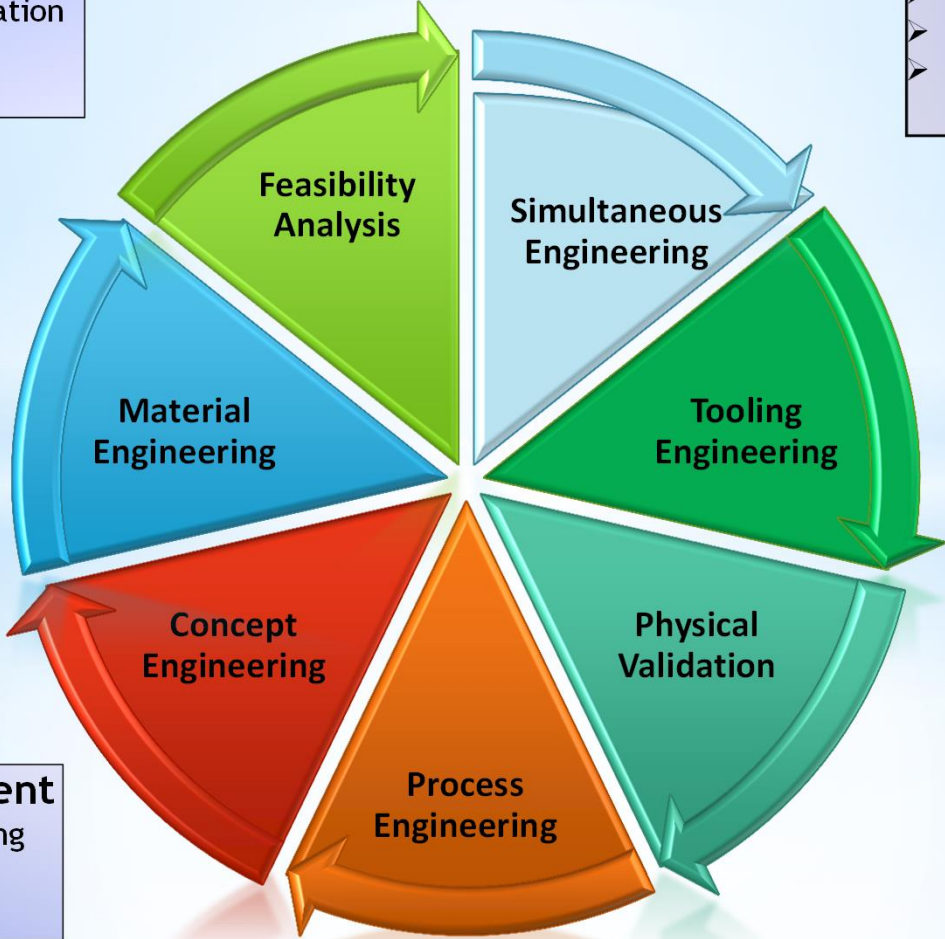
Mr. Shashank R Joshi
Director

• CAPABILITIES - AT A GLANCE



- Project Management**
- Development Coordination
 - Process Planning
 - QCD Management

- Tooling Center**
- Manufacturing Feasibility
 - Proto & Master Model Built
 - Proto & Production Tooling



- Product development**
- B surface & Engineering
 - Design Mechanics
 - Systems Packaging

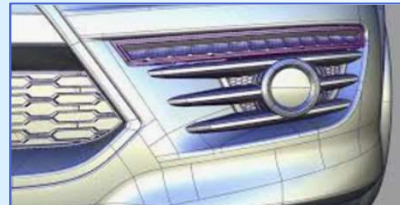
- Manufacturing**
- Core Process Expertise
 - Secondary Operations
 - Post process, Decorations Expertise

• CAPABILITIES – Engineering



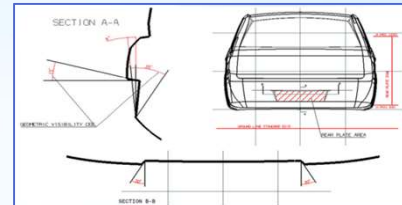
Benchmarking

- Tear down
- Thickness/Feature analysis
- Weight analysis
- Material study
- Gap & Flush study
- SPM study
- Packaging study
- BOM study



Styling & Craftmanship

- Surface analysis
- Gap & flush study
- Split line definition study
- Perceived gap study
- Tooling issues affecting style



Product development

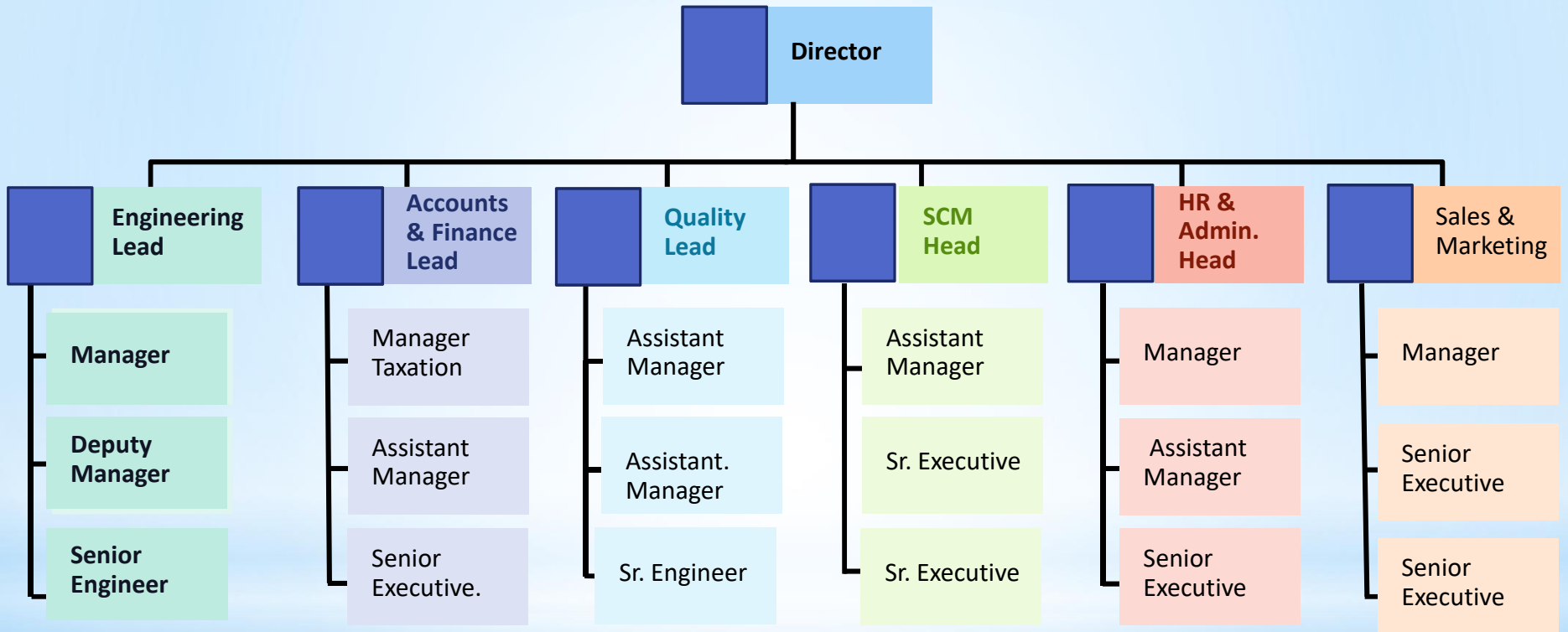
- Concept design
- Master section development
- Interface parts study
- Detailed part design
- Mounting strategy
- Locating strategy



Quality Management

- DVP
- Proto build
- Testing
- Validation
- Release Process
- SOP support

- Organization Chart



- CAPABILITIES – Injection Moldings



- CAPABILITIES – Blow Moldings



- Painting & Assemblies of auto parts



RADIATOR GRILL with painting MAN Trucks



FRONT BUMPER : APE TRUCK - PIAGGIO



WHEELARCH LINERS

- Unit I Bhosari T-73





- Molding Machines Details



Capacity	No. Of Machines	Make
80 T	3	BATTENFELD
130 T	3	DEMAG
180 T	1	BATTENFELD
300 T	1	BATTENFELD
350 T	1	TOSHIBA
400 T	1	BATTENFELD

- Unit II Bhosari



Sr. No.	Capacity	No. Of Machines	Make
1	5L	3	KB
2	20 L	4	KBM
3	30 L	3	KBM



- Unit III Sanaswadi
Area : 250000 Sq. FT.





- Molding Machines Details**



Capacity	No. Of Machines	Make
55T	1	DEMAG
80T	5	BATTENFELD
100T	1	TOSHIBA
130T	1	BATTENFELD
150T	1	DEMAG
180T	3	BATTENFELD
270T	1	BATTENFELD
300T	1	BATTENFELD
350T	1	TOSHIBA
400T	3	BATTENFELD
550T	1	STORK
580T	1	SOUND
600T	1	BATTENFELD
650T	1	BATTENFELD
800T	1	BATTENFELD

- Molding Machines Details 1000 Ton +



Capacity	No. Of Machines	Make
1000T	1	KAUSY
1250T	3	SOUND
1500T	1	BATTENFELD
1800T	1	UBE
2000T	1	FERROMATIC
2800T	1	SOUND
4000T	1	SOUND
3600T	1	SOUND
5400T	1	KRAUSS-MAFFEI



- **Blow Molding Machines Details**



Sr. No.	Capacity	No. Of Machines	Make
1	30L	1	ARYAN
2	60L	3	ARYAN
5	90L	2	ARYAN
7	150L	1	ARYAN
8	250L	1	ARYAN
9	300L	1	ARYAN



- Pearl Plastic Products



Make : MAPLE TAIWAN

Axis : 3 Axis.

Table : 1800x900 mm

Travel : 1800x900x900 mm

RPM : 12,000

Table Load Capacity : 5 TONS

Drilling



Gun Drilling



M1TR



- FACILITIES – Mould Making**



SR.NO	MACHINE DESCRIPTION	QTY	CAPACITY / SIZE
1	MAPEL VMC ME 1890 (TAIWAN)	1	1800 X 900
	MAPLE VMC DCM 3315 (TAIWAN)	1	3300 X 1500
2	EDM ELECTRA PLUS R 70 (70 AMPS)	1	900 X 600
	EMD SPARKONIX (25 AMPS)	1	400 X 300
3	UNIVERSAL MILLING KENSTAR	1	1400 X 250
	VERTICAL MILLING BIMPEX	1	850 X 250
	VERTICAL MILLING BFW	1	800 X 225
4	M1TR RAISE WITH DRO	1	1200 X 200
5	DRILLING MACHINE JASJIT	1	MAX 30 mm
6	LATHE PRITIK AMUT IND	1	BED 1200
7	SURFACE GRINDER ALEX	1	BED 1200
8	RADIAL DRILLING MACHINE	1	HT 2000 BED 1000 X 800

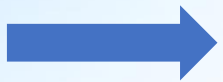


• DEVELOPMENT PROCESS FLOW

Mould Design



- Feasibility study
- CFT review

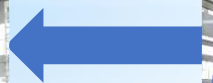
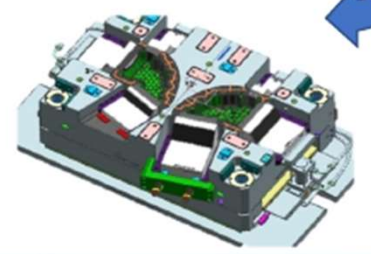


- UNIGRAPHICS v.10 (15 seats)
- CATIA V5-R21 (3 seats)
- AUTO CAD 2014 (5 seats)
- TRANSLATOR : IGES / STP / DXF



Mould Flow Analysis

- Version 14 - 1 Seat
- Version 19 - 1 seat



Tool prove Out & Part inspection

- 80T - 5400T Injection moulding machine
- CMM
- Holding gauges, Check fixtures

Manufacturing, Assembly, Die Spotting Press

- CNC Machining centers
- EDM, Wire EDM
- Die Spotting Press

Design For Machining (CAM)

- TEBIS (3 Seat)
- Delcam (2 Seat)

- Raw Material Testing Lab



Computerized Universal Testing Machine



VSP/HDT testing machine.



Computerized Izod / Charpy Impact Tester.



Muffle Furnace



ESCR testing machine



MFI tester



Notch Cutter

ESC RESISTANCE APPRATTUS ASTM D 1693 STD

HARDNESS TESTER

COLOR SCANNING SPECTOMETER

- Esteemed Customers



- Awards & Certifications





A HEARTFELT TRIBUTE

Lt. Rajiv G. Joshi
Founder

**We are Thankful to You for
Providing opportunity and
Foundation**

आम्ही आपले सदैव ऋणी राहु !!





*Thank
you*

